

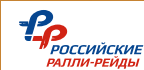
ЧЕМПИОНАТ И КУБОК РОССИИ ПО РАЛЛИ-РЕЙДАМ

г.Волгоград 18-20 сентября 2015г.



русская
автомобильная
федерация

ROAD BOOK
MEDIA

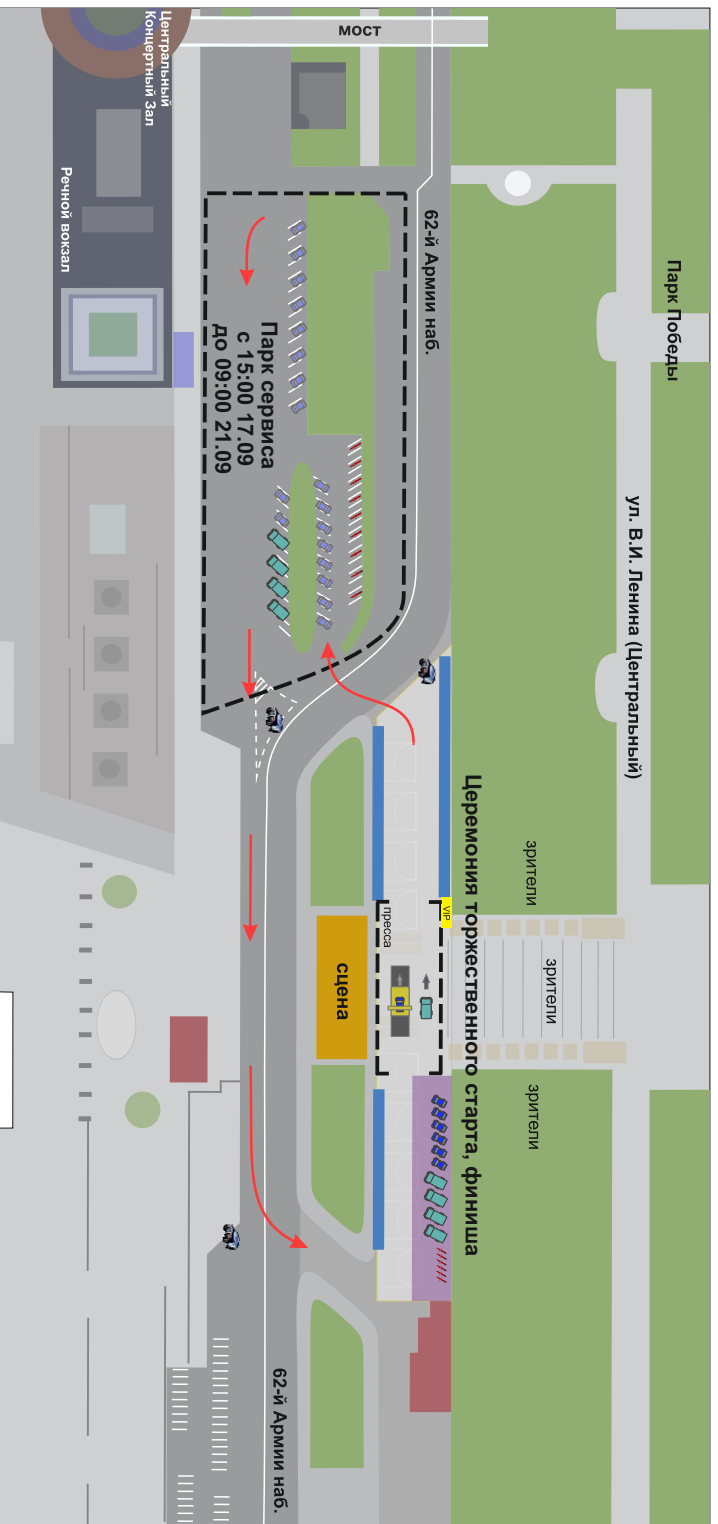


ДИСТАНЦИЯ РАЛЛИ - РЕЙДА "ВЕЛИКАЯ СТЕПЬ - ДОН 2015"

№	№ ЭТАПЕ	LIAISON	SS	LIAISON	SS	LIAISON	TOTAL LIAISON	TOTAL SS	TOTAL ЭТАПЕ
1	ЭТАПЕ 1	29,02 km	282,69 km	44,38 km	146,09 km	34,00 km	107,40km	428,78 km	536,18 km
2	ЭТАПЕ 2	81,44 km	146,09 km	33,83 km	—	—	115,27 km	146,09 km	261,36 km
Итого по ралли							222,67 km	574,87 km	797,54 km

**Координаты основных точек ралли
"Великая степь - Дон 2015"
Coordinates of the main points of rally**

Штаб ралли, Park Inn Rally Headquarters. Park Inn	N48 42.777 E44 30.665
Старт - Финиш ралли. Подиум Start - Finish Rally. Podium	N48 42.231 E44 31.297
Сервисный парк. Service area.	N48 42.129 E44 31.229
Старт СУ 1 DSS 1	N48 46.053 E44 18.318
Финиш СУ 1 ASS 1	N49 34.901 E43 41.426
Старт СУ 2,3 DSS 2,3	N49 17.915 E44 03.370
Финиш СУ 2,3 ASS 2,3	N48 53.702 E44 22.642
ТОЧКИ ДЛЯ ПРЕССЫ PRESS POINTS	
Точка №1 Руины, Паньшино RUINE, PANCHINO	N49 01.986 E44 01.063
Точка №2 Брод, Сады Придонья BROD, SADY PRIDONYA	N49 03.699 E44 00.317
Точка №3 сан. Качалино SAN.KAHALINO	N49 05.739 E44 00.920
Точка №4 Заправка МОТО, Качалино ZAPRAVKA MOTO, KAHALINO	N49 06.513 E44 01.651
Точка №5 Брод, р. Тишанка ж/д мост BROD, r.TISHANKA	N49 10.573 E44 03.783
Точка №6 Байбаев, ж/д переезд BAIBAEV	N49 11.091 E44 03.108
Точка №7 Иловля, Генеральский мостик ILOVLYA, GEN.MOST	N49 16.406 E43 57.298
Точка №8 Вилтов VILTOV	N49 25.961 E43 42.350
Точка №9 ПЕСКИ PESKI	N49 31.011 E43 43.926
Точка №10 Зимовский 1 ZIMOVSKIY 1	N49 32.374 E43 33.855
Точка №11 Зимовский 2 ZIMOVSKIY 2	N49 34.951 E43 33.777
Точка №12 Дамба, заправка МОТО DAMBA, ZAPRAVKA MOTO	N49 15.610 E44 22.213



- грузовики



- внедорожники



- МОТО



- УГИБДД

- зоны активности

- накопитель + ЗП

- парк сервиса

- подиум

- переное ограждение

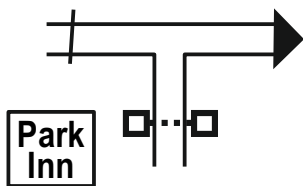
- направление движения

- зона церемонии старта

- VIP зона

0,00

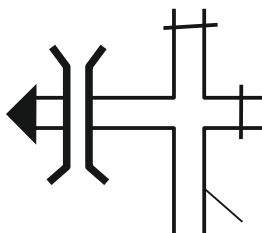
0,00

HQ Rally
Hotel
«Park Inn»

ул.Михаила Балонина 7

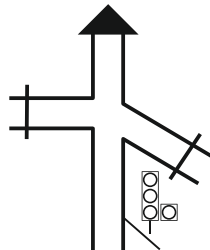
0,19

0,19



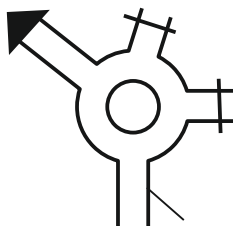
0,40

0,21



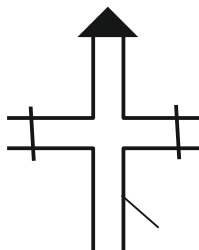
0,68

0,28



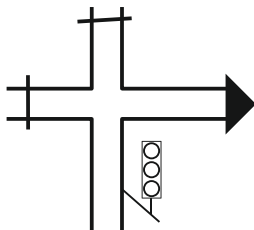
0,87

0,19



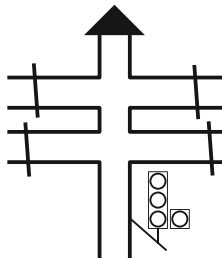
1,14

0,27



1,35

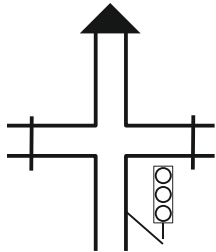
0,21



ул.Комсомольская

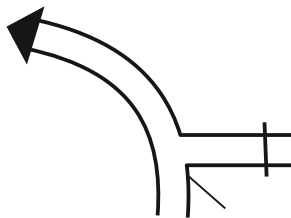
1,65

0,30



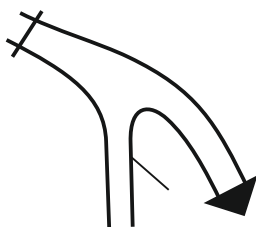
1,81

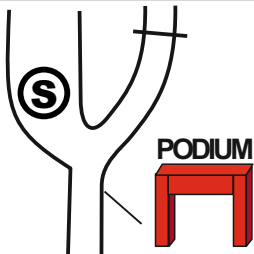
0,16



2,19

0,38

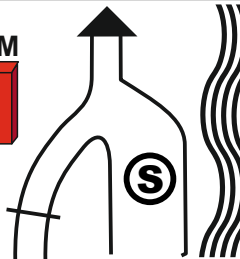


2,99**0,80****Парк сервиса
Подиум****наб. 62^{ой} Армии**

0,00

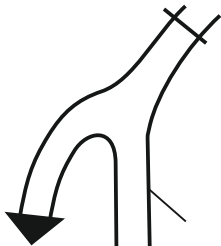
0,00

PODIUM

Парк сервиса
Подиумнаб. 62^{ой} Армии

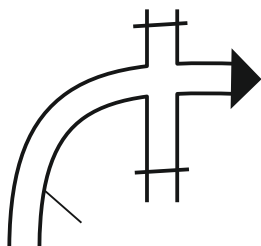
0,80

0,80



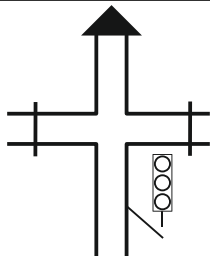
1,21

0,41



1,36

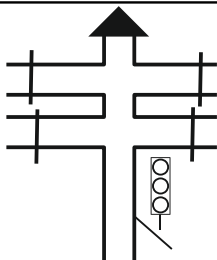
0,15



ул.Комсомольская

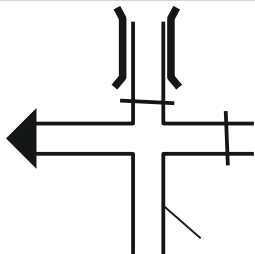
1,61

0,25



1,86

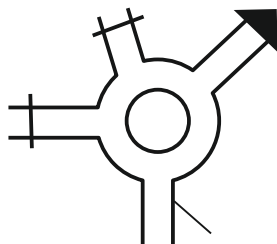
0,25



Ремонт моста

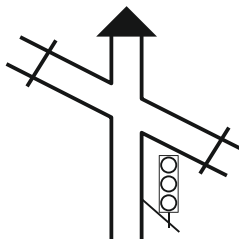
2,24

0,38



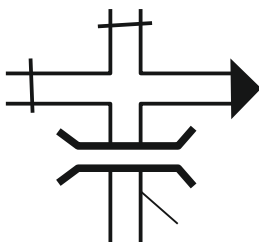
2,53

0,29



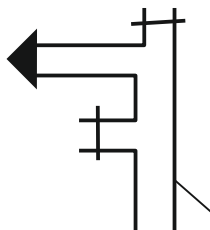
2,66

0,13



2,98

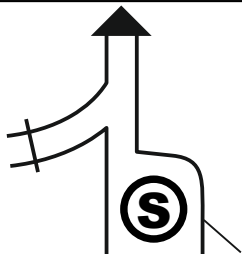
0,32

HQ Rally
«Park Inn»

ул.Михаила Балонина 7

0,00

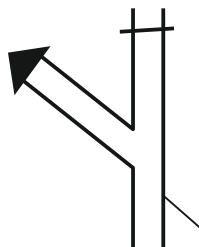
0,00



Выезд из
СЕРВИСА

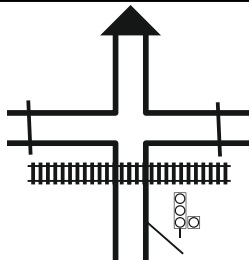
1,80

1,80



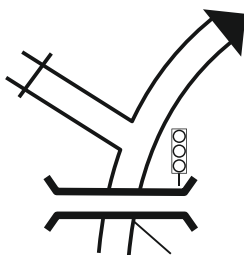
2,75

0,95



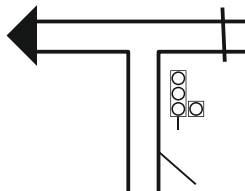
3,29

0,54



3,97

0,68

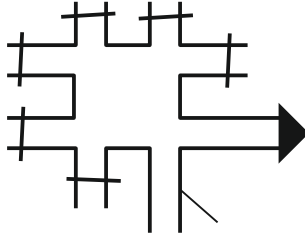


Service - Start SS 1

KM TOTAL: 28,90

5,47

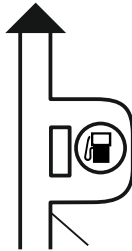
1,50



→ Moscow

7,86

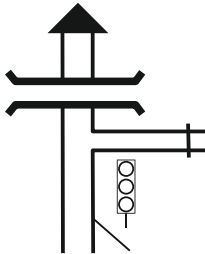
2,39



Ⓜ LUK

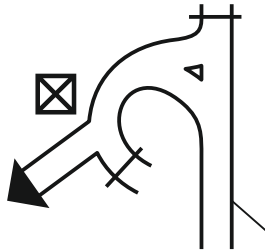
9,68

1,82



9,93

0,25



POLICE

→ Airport

10,31

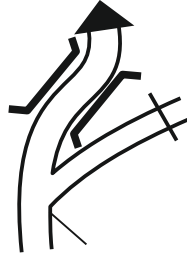
0,38



Ⓜ LUK

14,21

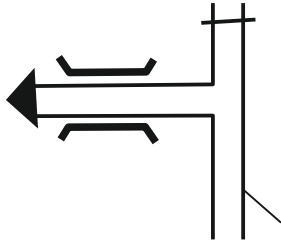
3,90



→ аэропорт
ГУМРАК

20,58

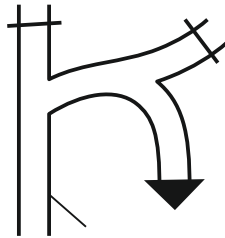
6,37




→ аэропорт
ГУМРАК

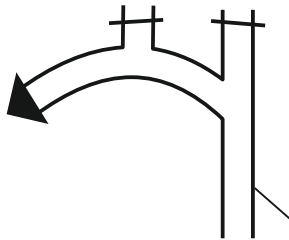
21,10

0,52



22,20

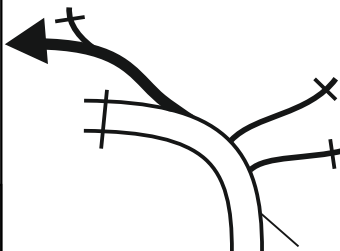
1,10



С 235°

25,16

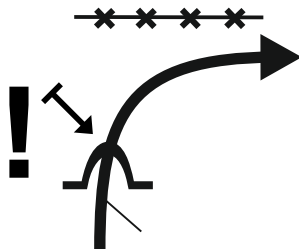
2,96



Конец
АСФАЛЬТА

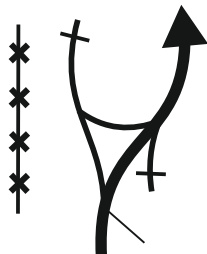
25,64

0,48



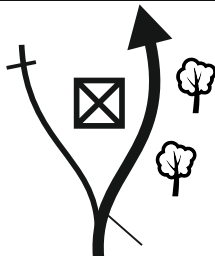
27,31

1,67



27,84

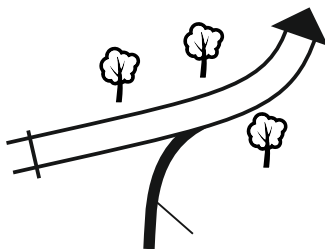
0,53



WC

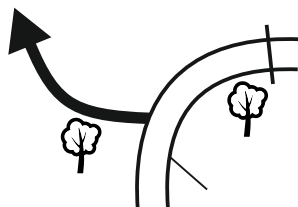
28,54

0,70



28,90

0,36



Старт СУ1
DSS 1

Service - т.

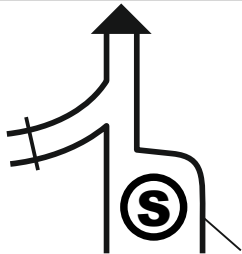


①

KM TOTAL: 73,90

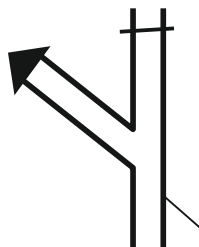
0,00

0,00

Выезд из
СЕРВИСА

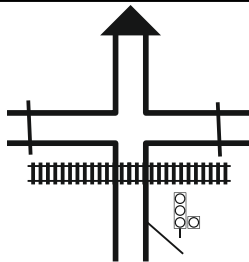
1,80

1,80



2,75

0,95



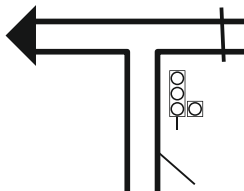
3,29

0,54



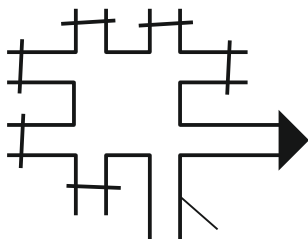
3,97

0,68



5,47

1,50



→ Moscow

7,86

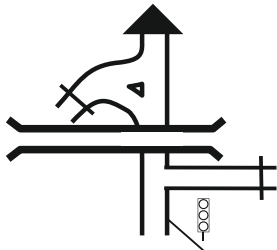
2,39



 **LUK**

9,68

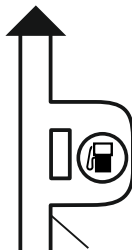
1,82



→ Moscow

11,49

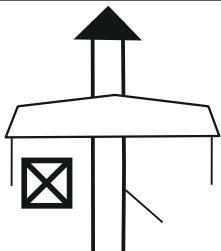
1,81



 **LUK**

28,20

16,71



POLICE

→ Moscow

Service - т.

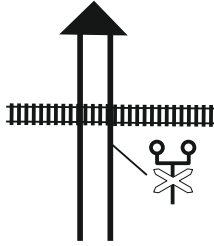


①

KM TOTAL: 73,90

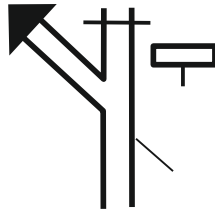
40,97

12,77



58,69

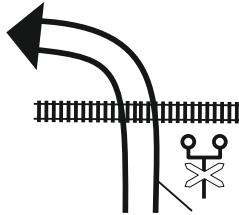
17,72



← Качалино

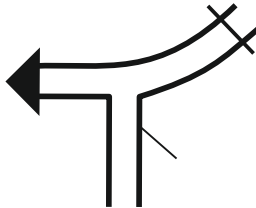
62,13

3,44



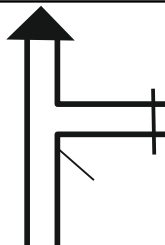
63,02

0,89



64,40

1,38



Service - т.

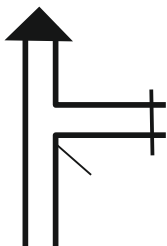


①

KM TOTAL: 73,90

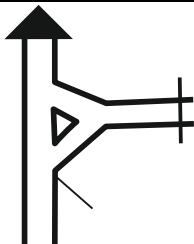
66,84

2,44



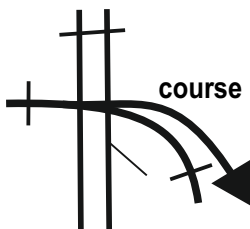
69,35

2,51



73,90

4,55



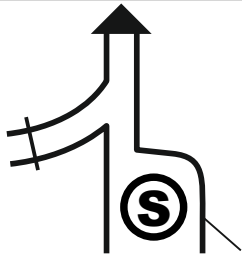
т. ①

направо 400м
проезд между руинами



0,00

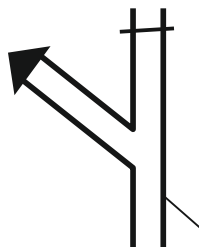
0,00



Выезд из
СЕРВИСА

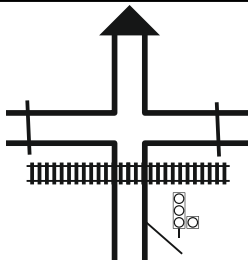
1,80

1,80



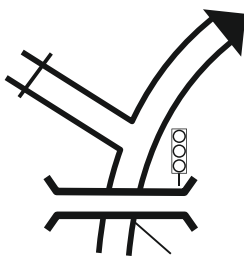
2,75

0,95



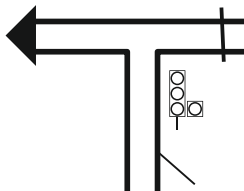
3,29

0,54



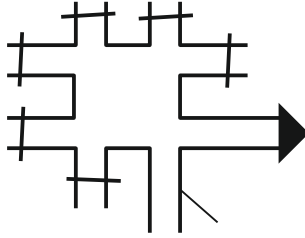
3,97

0,68



5,47

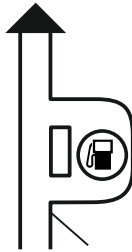
1,50



→ Moscow

7,86

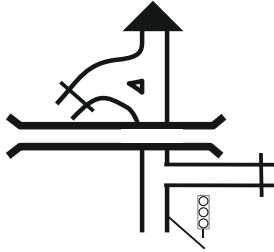
2,39



 **LUK**

9,68

1,82



→ Moscow

11,49

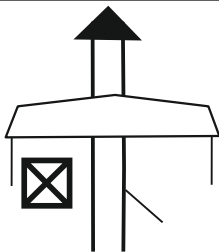
1,81



 **LUK**

28,20

16,71

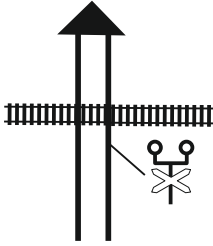


POLICE

→ Moscow

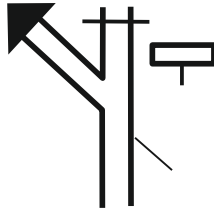
40,97

12,77



58,69

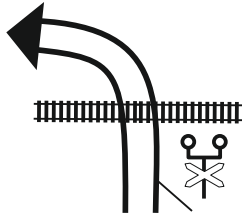
17,72



← Качалино

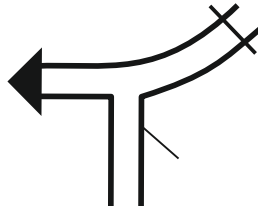
62,13

3,44



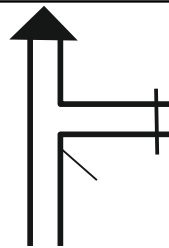
63,02

0,89



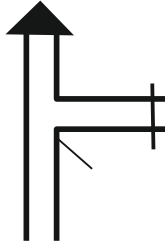
64,40

1,38



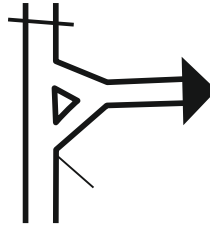
66,84

2,44



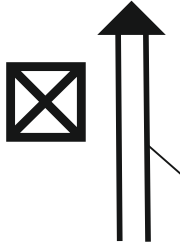
69,35

2,51



69,90

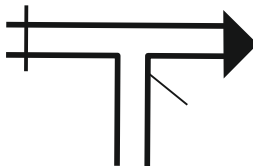
0,55



завод
Сады Придонья

70,75

0,85



71,20

0,45



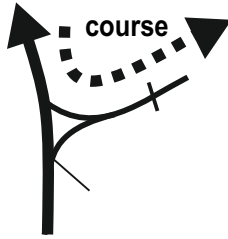
конец асфальта

Service - т.  ②

KM TOTAL: 73,25

72,00

0,80

навстречу трассе
под шлагбаум

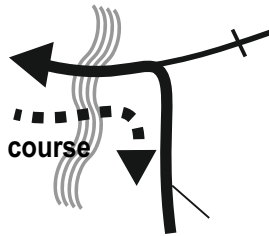
72,40

0,40

далее левее вдоль
посадки

73,25

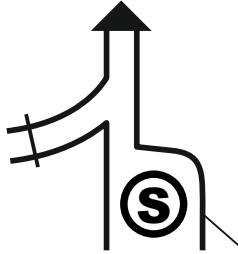
0,85

т.  ②Брод, р.Паньшинка
Сады Придонья



0,00

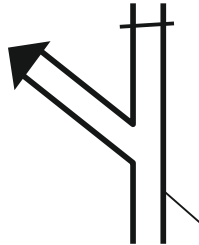
0,00



Выезд из
СЕРВИСА

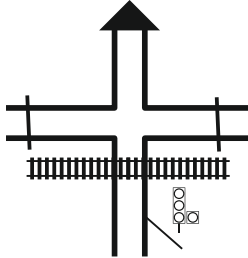
1,80

1,80



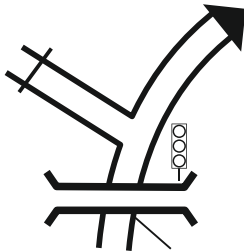
2,75

0,95



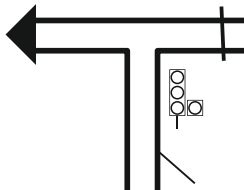
3,29

0,54



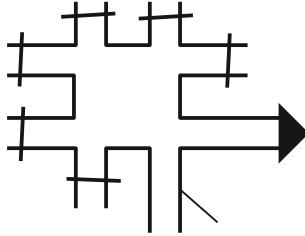
3,97

0,68



5,47

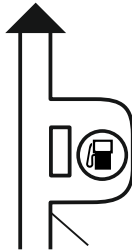
1,50



→ Moscow

7,86

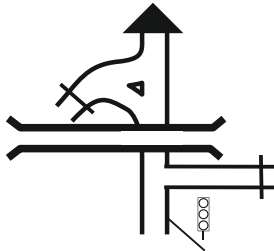
2,39



 **LUK**

9,68

1,82



→ Moscow

11,49

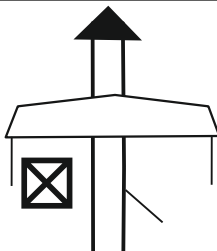
1,81



 **LUK**

28,20

16,71

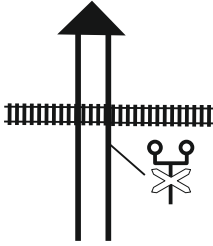


POLICE

→ Moscow

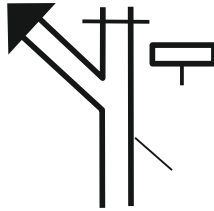
40,97

12,77



58,69

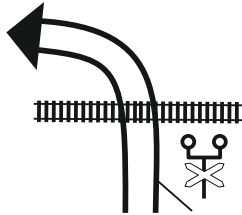
17,72



← Качалино

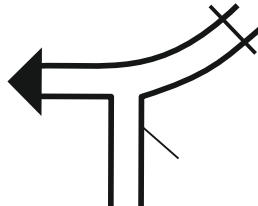
62,13

3,44



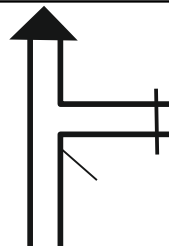
63,02

0,89



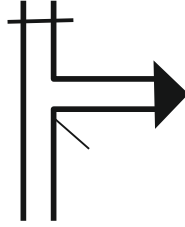
64,40

1,38



66,84

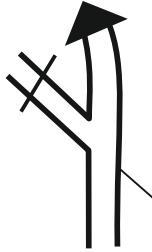
2,44



сан. Качалинский →

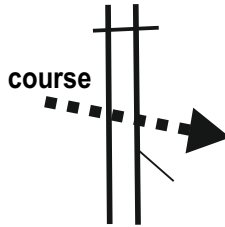
68,30

1,46



69,55

1,25



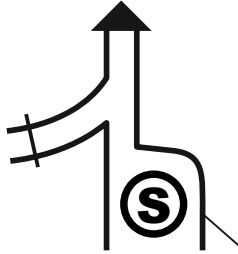
т.  ③

сан. Качалинский
пересечение асфальта



0,00

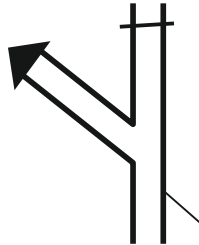
0,00



Выезд из
СЕРВИСА

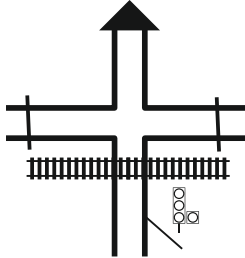
1,80

1,80



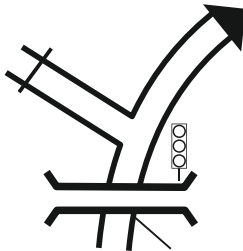
2,75

0,95



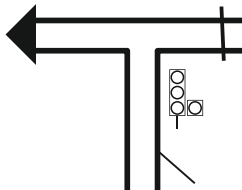
3,29

0,54



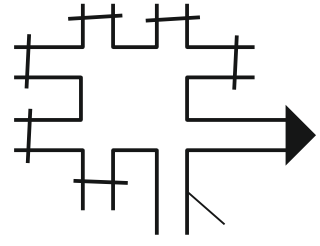
3,97

0,68



5,47

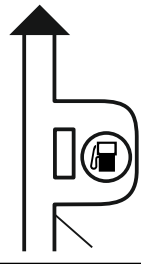
1,50



↳ **Moscow**

7,86

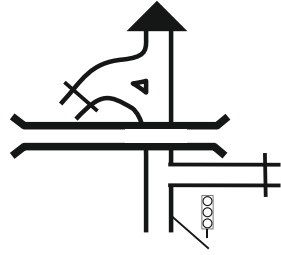
2,39



 **LUK**

9,68

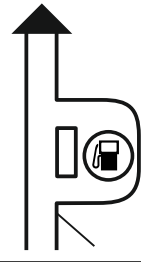
1,82



↳ **Moscow**

11,49

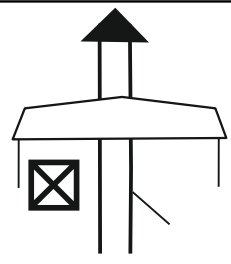
1,81



 **LUK**

28,20

16,71

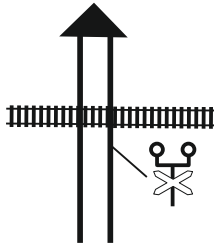


POLICE

↳ **Moscow**

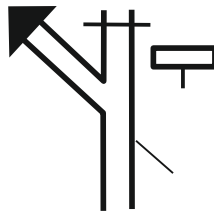
40,97

12,77



58,69

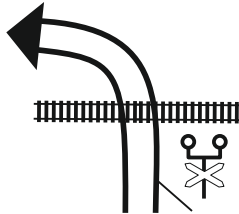
17,72



← Качалино

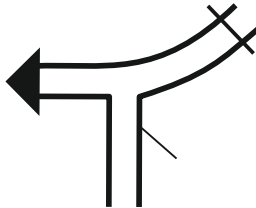
62,13

3,44



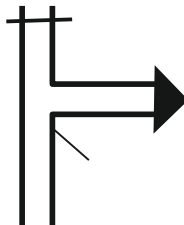
63,02

0,89



64,40

1,38



Service - т.

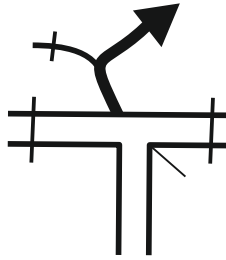


④

KM TOTAL: 66,28

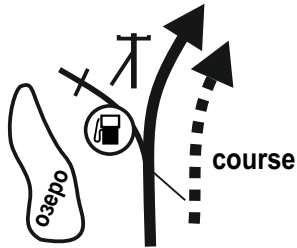
65,80

1,40



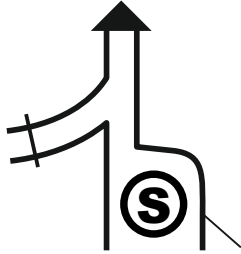
66,28

0,48

т.  ④Качалино
заправка мото

0,00

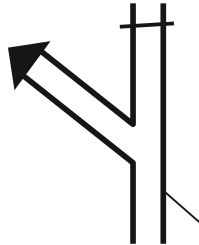
0,00



Выезд из
СЕРВИСА

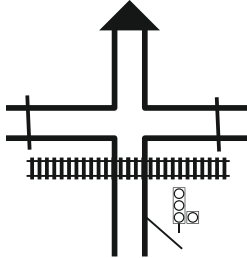
1,80

1,80



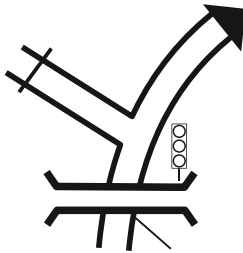
2,75

0,95



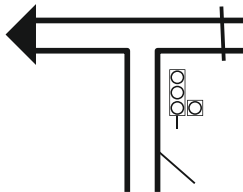
3,29

0,54



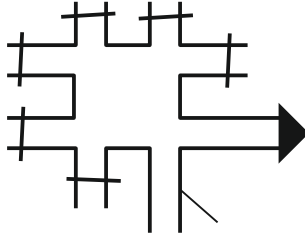
3,97

0,68



5,47

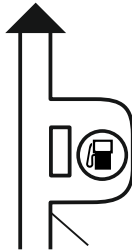
1,50



↳ **Moscow**

7,86

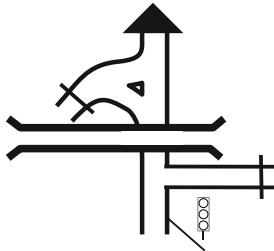
2,39



 **LUK**

9,68

1,82



↳ **Moscow**

11,49

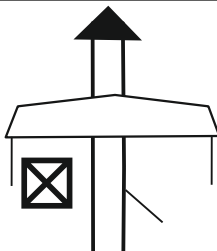
1,81



 **LUK**

28,20

16,71

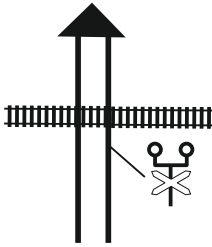


POLICE

↳ **Moscow**

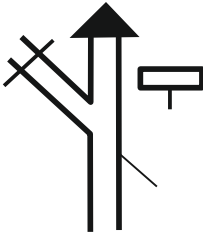
40,97

12,77



58,69

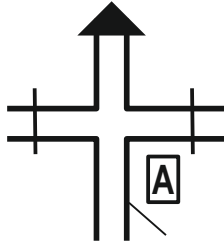
17,72



← Качалино

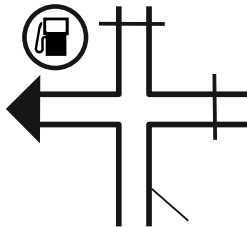
66,50

7,81



69,55

3,05



← Краснодарский

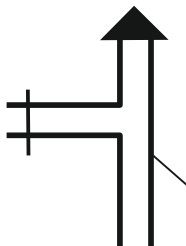


АЗС «ЛАКОЙЛ»

км/столб 481

71,20

1,65

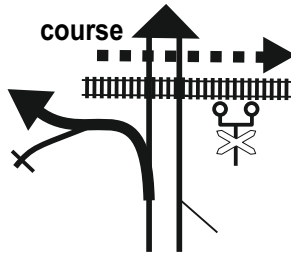


Service - т.  ⑤ ⑥

KM TOTAL: 73,50

72,30

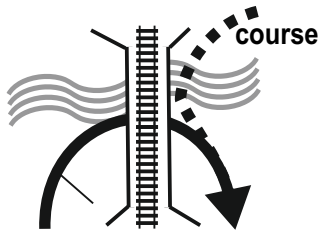
1,10



за переездом
т.  ⑥
х. Байбаев
песчаная дорога

73,50

1,20

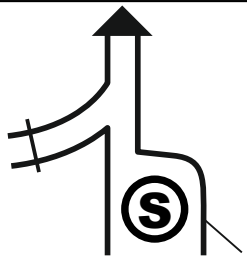


под ж/д мостом
т.  ⑤
брод р. Тишанка



0,00

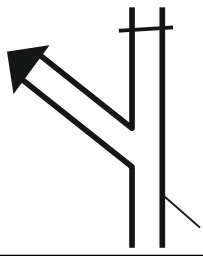
0,00



Выезд из
СЕРВИСА

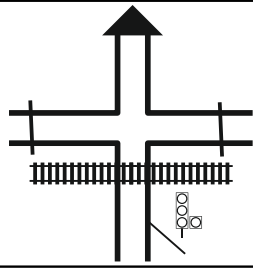
1,80

1,80



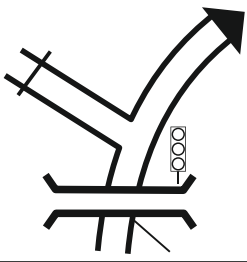
2,75

0,95



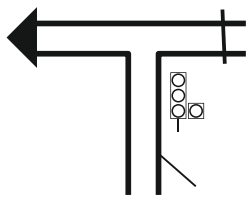
3,29

0,54



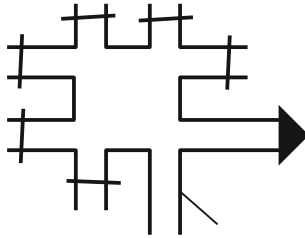
3,97

0,68



5,47

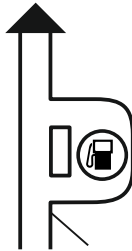
1,50



→ Moscow

7,86

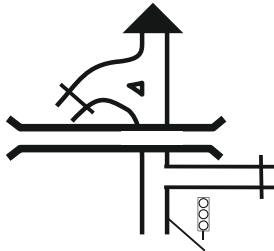
2,39



 **LUK**

9,68

1,82



→ Moscow

11,49

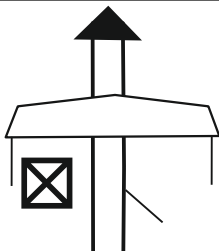
1,81



 **LUK**

28,20

16,71



POLICE

→ Moscow

Service - т.

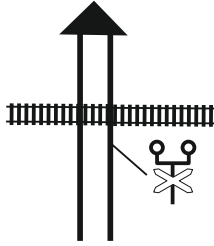


7

KM TOTAL: 93,42

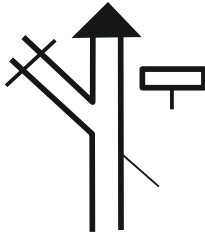
40,97

12,77



58,69

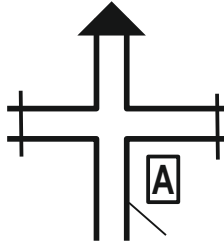
17,72



← Качалино

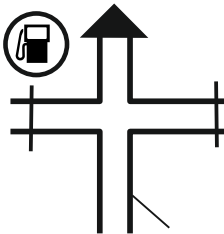
66,50

7,81



69,55

3,05



← Краснодарский

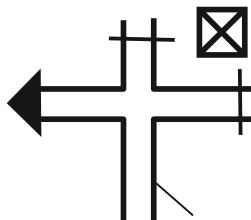


АЗС «ЛАКОЙЛ»

км/столб 481

85,25

15,70

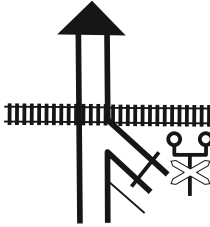


POLICE

← Иловля

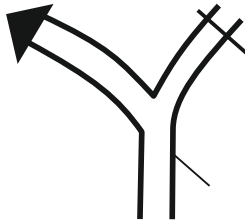
86,96

1,71



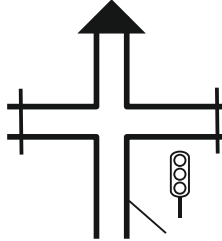
87,20

0,24



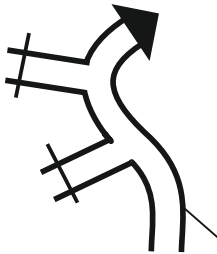
89,09

1,89



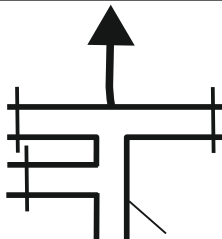
90,39

1,30



90,71

0,32



на гравий

PAGE

43

Service - т.

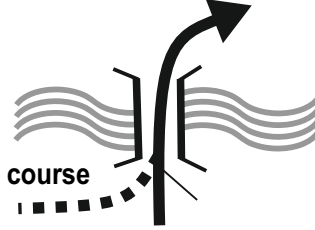


7

KM TOTAL: 93,42

93,42

2,71

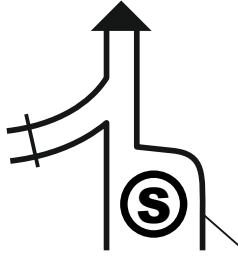


т.  7

Иловля,
Генеральский мост

0,00

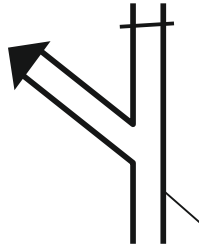
0,00



Выезд из
СЕРВИСА

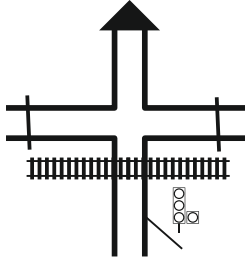
1,80

1,80



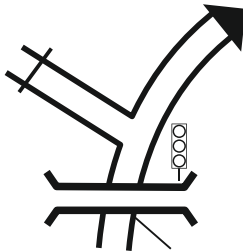
2,75

0,95



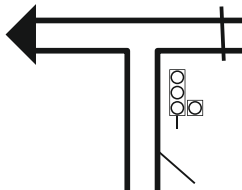
3,29

0,54



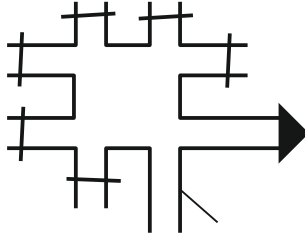
3,97

0,68



5,47

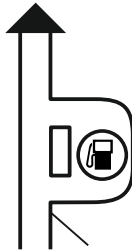
1,50



→ Moscow

7,86

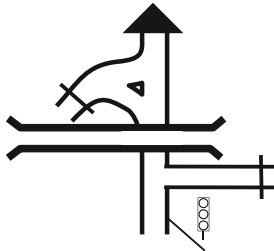
2,39



 **LUK**

9,68

1,82



→ Moscow

11,49

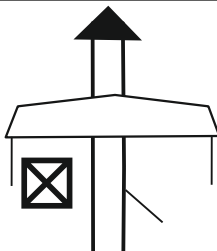
1,81



 **LUK**

28,20

16,71

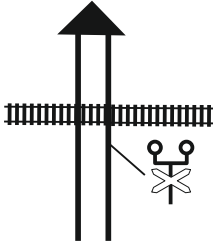


POLICE

→ Moscow

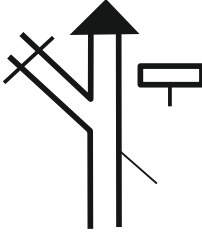
40,97

12,77



58,69

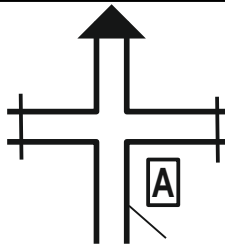
17,72



← Качалино

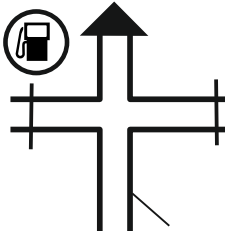
66,50

7,81



69,55

3,05



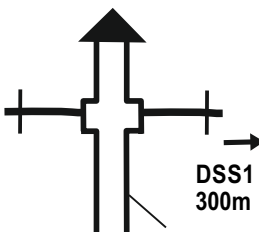
← Краснодарский

 АЗС «ЛАКОЙЛ»

км/столб 481

81,05

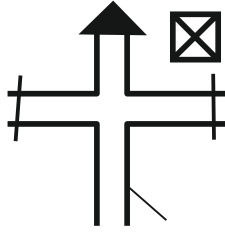
11,50



Справа 300 м Старт СУ 2,3

85,25

4,20

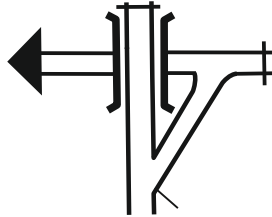


POLICE

← Иловля

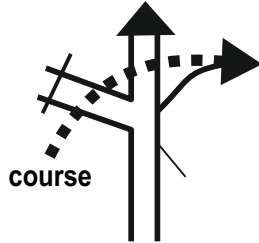
106,25

21,00

Лог →
← Вилтов

115,05

8,80

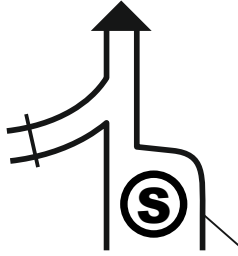


course

т.  8Вилтов
пересечение асфальта
песчаная дорога

0,00

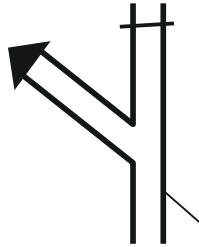
0,00



Выезд из
СЕРВИСА

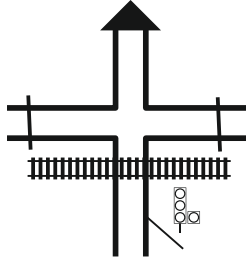
1,80

1,80



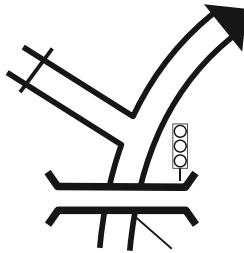
2,75

0,95



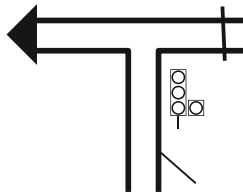
3,29

0,54



3,97

0,68

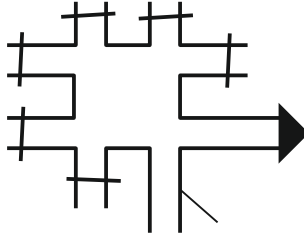


Service - T.  9

KM TOTAL: 118,65

5,47

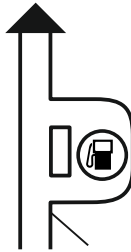
1,50



→ Moscow

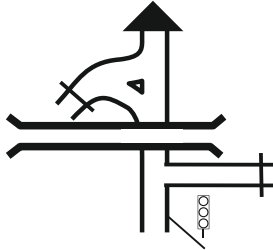
7,86

2,39

 **LUK**

9,68

1,82



→ Moscow

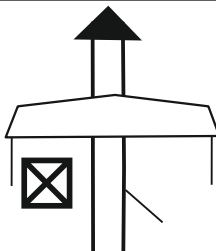
11,49

1,81

 **LUK**

28,20

16,71

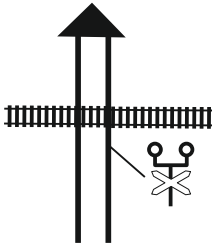


POLICE

→ Moscow

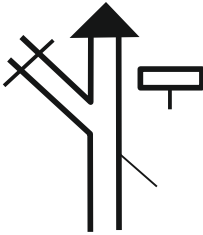
40,97

12,77



58,69

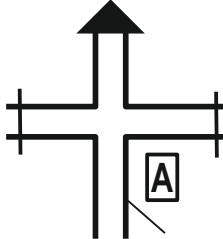
17,72



← Качалино

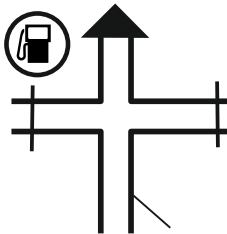
66,50

7,81



69,55

3,05



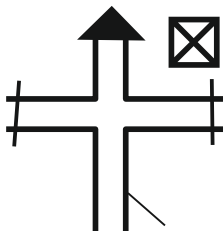
← Краснодарский

 АЗС «ЛАКОЙЛ»

км/столб 481

85,25

15,70



POLICE

← Иловля

Service - т.

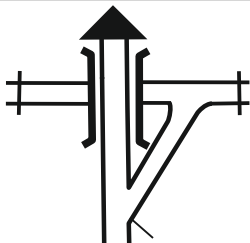


9

KM TOTAL: 118,65

106,25

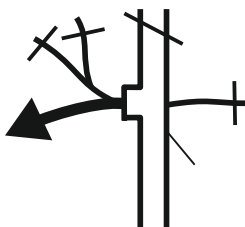
21,00



Лог →
← Вилтов

114,45

8,20



км/столб 526 +200м
съезд с асфальта
на твёрдую полевую
дорогу

N49 31.678
E43 47.173

114,63

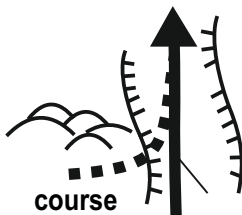
0,18



через 3 км тяжёлая
песчаная дорога,
только полный привод

118,65

4,02



т. 9

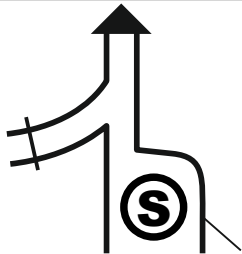
Пески

Выход из дюн
на песчаную дорогу



0,00

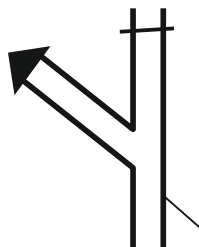
0,00



Выезд из
СЕРВИСА

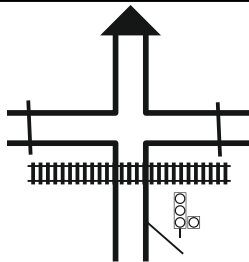
1,80

1,80



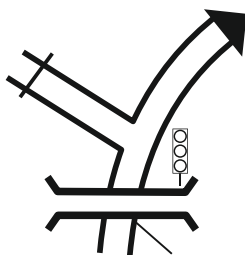
2,75

0,95



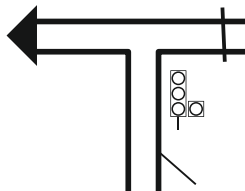
3,29

0,54



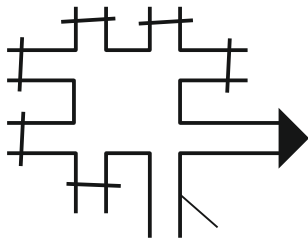
3,97

0,68



5,47

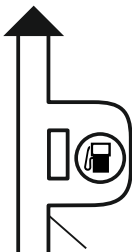
1,50



↳ **Moscow**

7,86

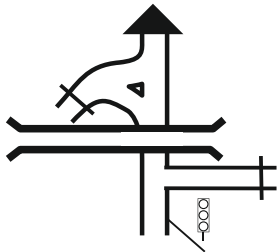
2,39



 **LUK**

9,68

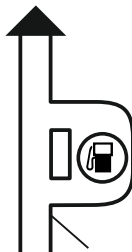
1,82



↳ **Moscow**

11,49

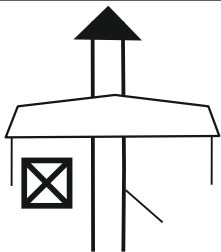
1,81



 **LUK**

28,20

16,71

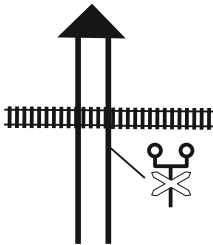


POLICE

↳ **Moscow**

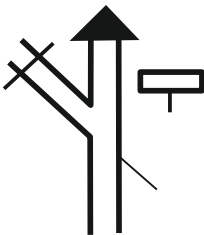
40,97

12,77



58,69

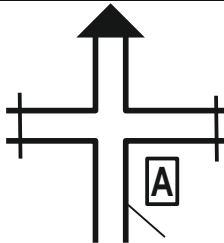
17,72



← Качалино

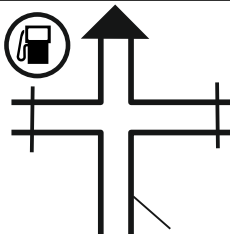
66,50

7,81



69,55

3,05



← Краснодарский

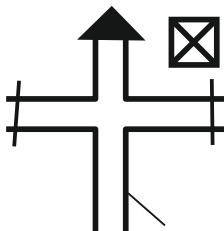


АЗС «ЛАКОЙЛ»

км/столб 481

85,25

15,70

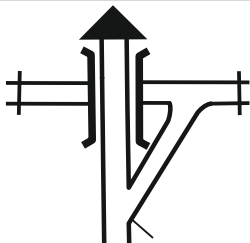


POLICE

← Иловля

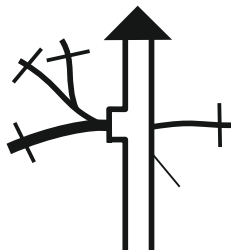
106,25

21,00



114,45

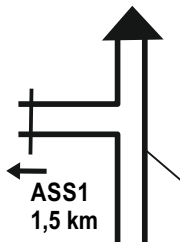
8,20



км/столб 526 +200м

123,35

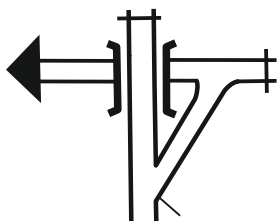
8,90



Налево 1,5 км финиш СУ 1

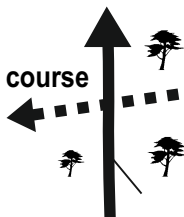
133,35


10,00



141,45

8,10



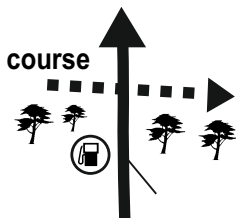
т.  ⑪
Зимовский 2
Пересечение асфальта
плотная песчаная дорога

Service - т.  (10)(11)ASS1

KM TOTAL: 146,55

146,55

5,10

т.  (10)

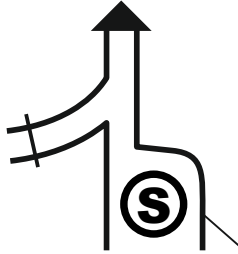
Зимовский 1

Пересечение асфальта
Заправка мото
Тяжёлая песчаная дорога
с колеёй и буграми



0,00

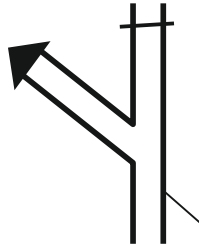
0,00



Выезд из
СЕРВИСА

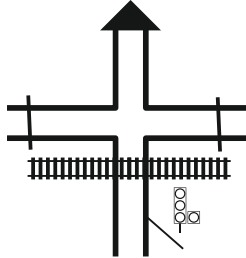
1,80

1,80



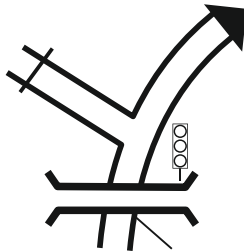
2,75

0,95



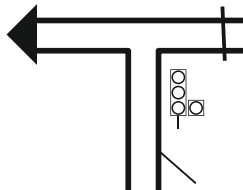
3,29

0,54



3,97

0,68

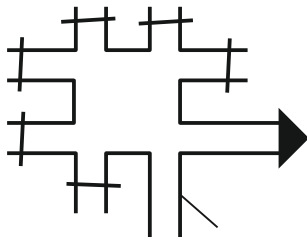


Service - Т.  12

KM TOTAL: 91,45

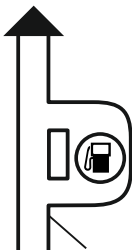
5,47

1,50


 Moscow

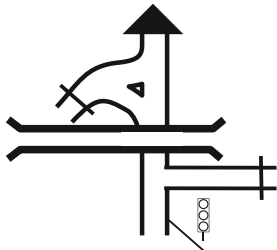
7,86

2,39


 **LUK**

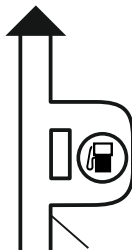
9,68

1,82


 Moscow

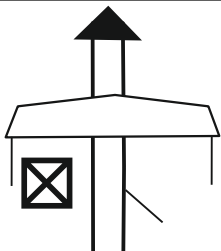
11,49

1,81


 **LUK**

28,20

16,71



POLICE

 Moscow

Service - т.

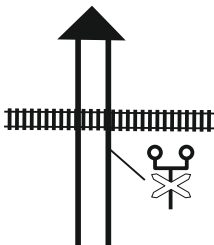


12

KM TOTAL: 91,45

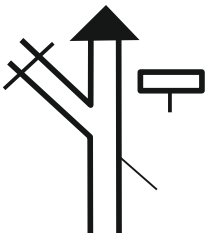
40,97

12,77



58,69

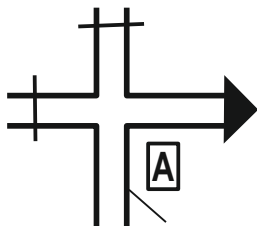
17,72



← Качалино

66,50

7,81

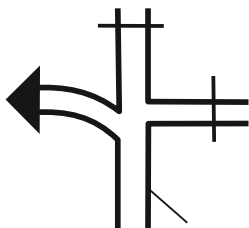


Пролетарий →

N49 10.258
E44 05.677

80,05

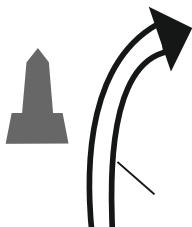
13,55



х. Медведев

80,60

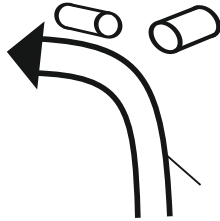
0,55



монумент

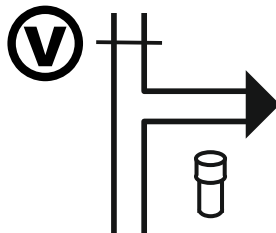
81,58

0,98



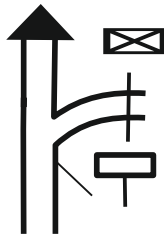
81,70

0,12



88,30

6,60



п. Обильный

88,63

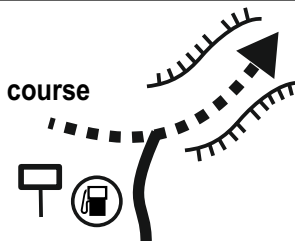
0,33



Съезд с асфальта

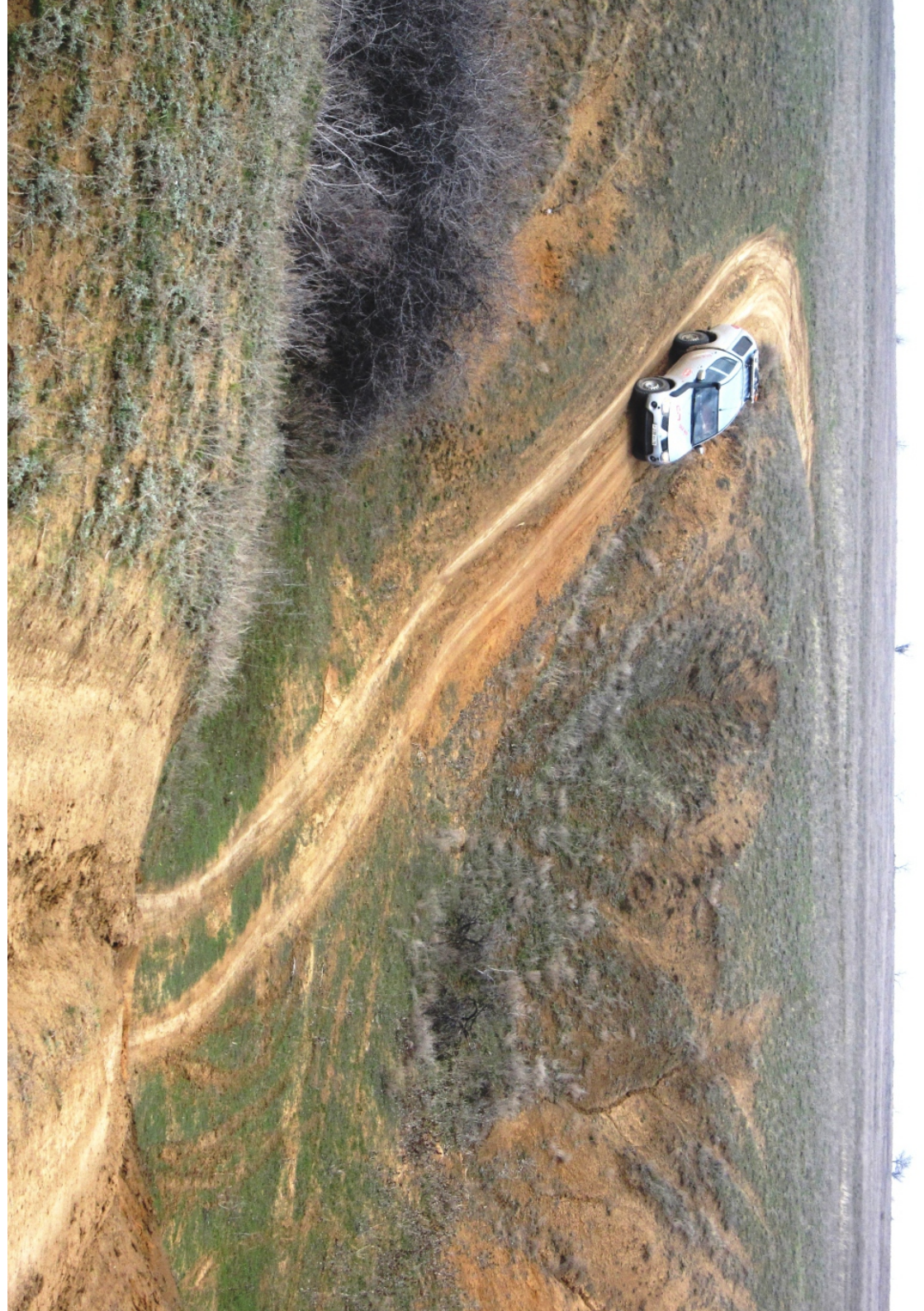
91,45

2,82



т.  12

Дамба, заправка мото
Слева большой овраг
Справа въезд на дамбу





park inn
by Radisson
VOLGOGRAD

Авега
ГРУППА КОМПАНИЙ



ПРОИЗВОДИТЕЛЬНО-ТЕХНИЧЕСКОЕ ПРЕДПРИЯТИЕ
ПОРШЕНЬ




**РОССИЙСКИЕ
РАЛЛИ-РЕЙДЫ**

Адрес: 600023, г. Владимир,
ул. Центральная, д. 17

Тел. (4922) 42-52-11, 42-52-60

E-mail: info@rosrr.com

www.rosrr.com